

# Nyack One-Design Regatta

Nyack Boat Club – 59 Gedney Street, Nyack, NY

June 15 & 16, 2019

Lightnings: Magnus Pedersen Regatta

Sonars: The Tappan Zee Challenge

Vipers: Nyack Viper Open



## Sailing Instructions

### 1 RULES

The regatta will be governed by the *rules* as defined in *The Racing Rules of Sailing*.

### 2 NOTICE TO COMPETITORS

Notices to competitors will be posted on the Race Committee Notice Board located at the south end of the NBC porch and online at <https://yachtscoring.com/emenu.cfm?eID=9496>

### 3 CHANGES TO SAILING INSTRUCTIONS

Any change to the sailing instructions will be posted at least 2 hours prior to the warning time of the first race. Any change to the schedule of races will be posted by 2000 on the day before it will take effect.

### 4 SIGNALS MADE ASHORE

4.1 Signals made ashore will be displayed from the flagpole at the RC slip.

4.2 When flag AP is displayed ashore, '1 minute' is replaced with 'not less than 30 minutes' in the Race Signals AP.

### 5 SCHEDULE OF RACES

Date	Time	Activity
Sat, June 15	0900	Competitors' Meeting.
	1100	First Scheduled Warning. Maximum of 4 races.
Sun, June 16	1000	First Scheduled Warning. Maximum of 4 races.
	1300	No Warning after this time.

### 6 CLASS FLAGS

Class flags will be the class emblem on a white background.

### 7 RACING AREA

The racing area will be the part of the Hudson River known as the Tappan Zee, south of Hook Mountain and north of the Tappan Zee Bridge as shown in Attachment I.

### 8 COURSES

8.1 The course diagrams and course identifiers are shown in Attachment II.

8.2 No later than the warning signal, the Signal Boat will display the course and the approximate magnetic bearing to the first mark.

### 9 MARKS

9.1 Marks will be orange inflatable tetrahedrons.

9.2 New marks, as provided for in SI 12, will be yellow inflatable cylinders.

9.3 The starting marks will be an RC vessel and lime green tetrahedron.

9.4 The finishing and offset marks will be small orange inflatable tetrahedron.

## **10 OBSTRUCTIONS**

- 10.1 The NBC mooring area and the restricted construction zone are designated as obstructions. No boat shall sail within these obstructions while racing.
- 10.2 The mooring area is defined as the area within straight lines linking all outermost mooring buoys.
- 10.3 The construction area for the new bridge [Governor Mario Cuomo Bridge] includes 16 construction barge locations and is marked by lighted buoys. See the bridge website here for details - <https://www.newnybridge.com/boater/>

## **11 THE START**

- 11.1 The starting line will be between the staff displaying an orange flag on the Signal Boat at the starboard end and the course side of the starting mark.
- 11.2 A boat starting later than 10 minutes after her starting signal will be scored DNS without a hearing. This changes RRS 63.1, A4, and A5.
- 11.3 The RC will attempt to hail the sail number(s) of OCS boat(s) after the starting signal on VHF radio. Failure to make a hail or to time it promptly will not be grounds for redress. This changes RRS 62.1(a).

## **12 CHANGE OF THE NEXT LEG OF THE COURSE**

To change a leg of the course, the RC will lay a new mark or move the finishing line or move the gate and remove the original mark as soon as practicable. When in a subsequent change a new mark is replaced, it will be replaced by an original mark.

## **13 THE FINISH**

The finish line will be between the staff displaying an orange flag on the Signal Boat and the course side of the finishing mark.

## **14 ALTERNATIVE PENALTIES**

Appendix V shall be in effect for this regatta.

## **15 TIME LIMITS**

- 15.1 The time limit for a race shall be two hours from its starting signal. If no boat completes the race within the two-hour limit, the race shall be abandoned.
- 15.2 If no boat completes the first leg of a race within 45 minutes, the race shall be abandoned.
- 15.3 Any boat that has not finished within the later of 30 minutes after the first finisher shall be scored TLE (2 plus finishers) without a hearing. This changes RRS 63, A4, and A5.

## **16 PROTESTS AND REQUESTS FOR REDRESS**

- 16.1 Protest forms are available in the rack next to the RC locker.
- 16.2 Protests and requests for redress shall be delivered to the RC within 30 minutes after the Signal Boat reaches her mooring or slip. This changes RRS 62.2.
- 16.3 A boat intending to protest or request redress shall inform the RC upon finishing that race.

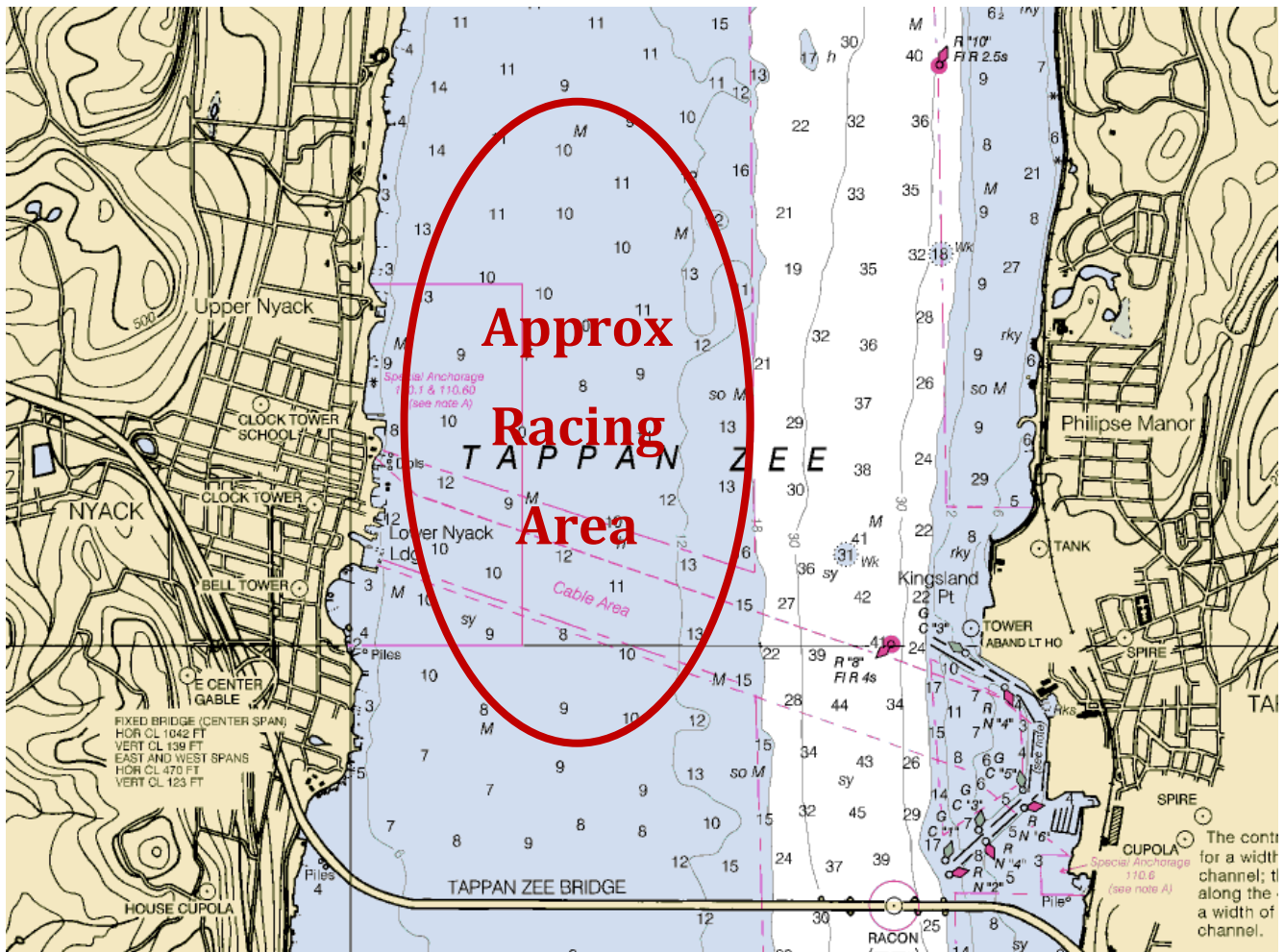
## **17 SCORING**

- 17.1 One race must be completed to constitute a regatta.
- 17.2 When fewer than six races have been completed, a boat's regatta score will be the total of her race scores.
- 17.3 When six or more races have been completed, a boat's series score will be the total of her race scores excluding her worst score.

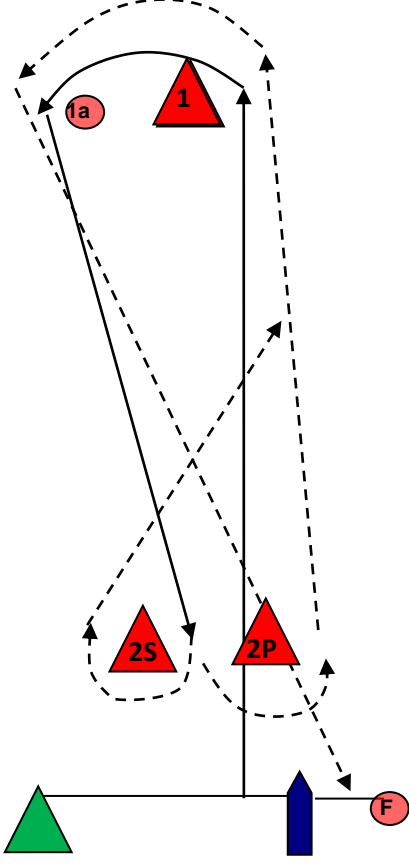
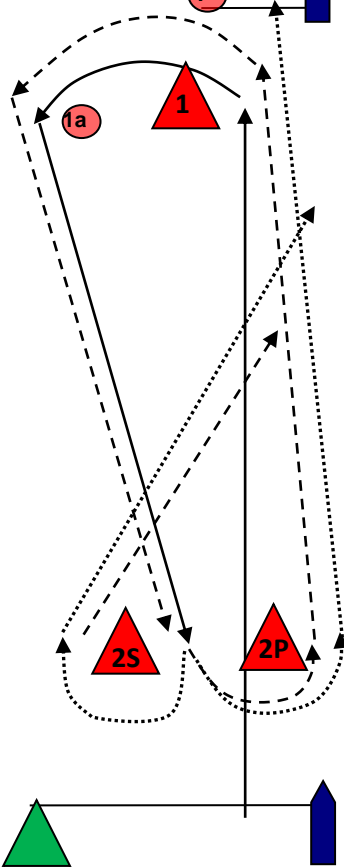
## **18 SAFETY**

- 18.1 All boats intending to race are requested to check in with the RC, before their first race of each day, by sailing past the Signal Boat on starboard tack, hailing their sail number and receiving verbal confirmation from the RC.
- 18.2 A boat that retires from a race shall notify the RC as soon as possible by sailing by the Signal Boat or a mark boat or hailing the RC on VHF.
- 18.3 A boat that retires and does not notify the RC will be scored DNE, Disqualification Not Excludable. This changes RRS 63.1., A4, and A5.

# Attachment I – Approximate Racing Area



## Attachment II – Sample Course Diagrams

Course 4		Course 5
		
<p>Start, 1 (port), 1a (port), between 2S and 2P, 1(port), 1a (port), finish</p>		<p>Start, 1 (port), 1a (port), between 2S and 2P, 1(port), 1a (port), between 2S and 2P, finish</p>

**Other possible courses:**

Course 3: Start - 1 - 1a - Gate – Finish (Upwind)

Course 6: Start - 1 - 1a - Gate - 1 - 1a - Gate- 1 - 1a – Finish (Downwind)

**NOTE – If one gate mark (2S or 2P) is missing, the remaining mark shall be rounded to port.**